

Rural & Urban Places – *Green Square*

A fieldwork program to support Stage 6 Geography

OBSERVAT
ENVIRONMENTAL EDUCATION CENTRE



RY HILL

Rural & Urban Places - Green Square is a S6 Geography fieldwork program that focuses on the Rural and Urban Places topic using a case study of Barangaroo as an urban place.

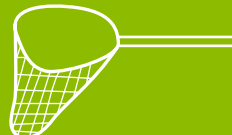
Students will visit Green Square to identify and investigate:

- The location and character of the place
- Geographical processes, both physical and human, that have shaped the identity of the place
- Cultural, economic and political links to other places
- The nature and changes affecting the place, including social economic and environmental
- Responses and strategies, including for sustainability.



The program has three main components:

1. Introductory activities, including a comprehensive presentation on Green square to familiarise students with the study site and fieldwork concepts covered.
2. A whole day fieldwork experience in Green Square, including collecting fieldwork data on student's devices to create a virtual fieldwork map.
3. Follow-up activities to enhance geographical knowledge and skills, including a variety of resources about Green Square.



Rural & Urban Places – Green Square

A fieldwork program to support Stage 6 Geography

This program supports the S6 Geography Syllabus outcomes of:

OBSERVAT
ENVIRONMENTAL EDUCATION CENTRE



- ☀️ The Rural & Urban Places topic
- ☀️ A case study of an urban place
- ☀️ Using geographical skills and tools including conducting fieldwork.



Cost: From \$10 per student

Enquiries: Phone: Observatory Hill EEC on 9247 7321

Email: observhill-e.school@det.nsw.edu.au

For more information about this program and other environmental education programs, visit the Observatory Hill EEC website at:

<http://observatoryhilleec.nsw.edu.au/secondary-programs>

