

Environmental Change & Management

A fieldwork program to support Stage 5 Geography

OBSERVATORY HILL
ENVIRONMENTAL EDUCATION CENTRE



'Environmental Change and Management supports the Stage 5 Geography topic 'Environmental Change and Management', and focuses on marine environments and ways people can change and manage them.

The program has three main components:

1. Introductory activities and resources to introduce the students to the fieldwork.
2. A whole day fieldwork experience at the Sydney Institute of Marine Science (SIMS) at Mosman, and the adjacent Clifton Gardens Reserve
3. Follow up activities to enhance geographical knowledge and skills.

During the fieldwork day, students will:

- Visit the Sydney Institute of Marine Science theater to learn about human impacts on marine environments, particularly microplastics and stormwater
- Take part in a citizen science project (with Dr Scott Wilson, Senior Lecturer in Environmental Science), to investigate the causes, extent and consequences of plastic pollution
- Visit the SIMS Marine Discovery Centre to learn about biophysical processes in oceans, and environmental management issues and strategies in Sydney Harbour
- Practice using basic geographic tools including GPS devices, mapping, field sketching, photo interpretation etc
- Measure environmental factors with instruments including water testing equipment and a microplastics investigation with sieves



Environmental Change & Management

A fieldwork program to support Stage 5 Geography

OBSERVAT
ENVIRONMENTAL EDUCATION CENTRE



RY HILL



Cost:

from \$15 per student (depends on no of classes)

Enquiries:

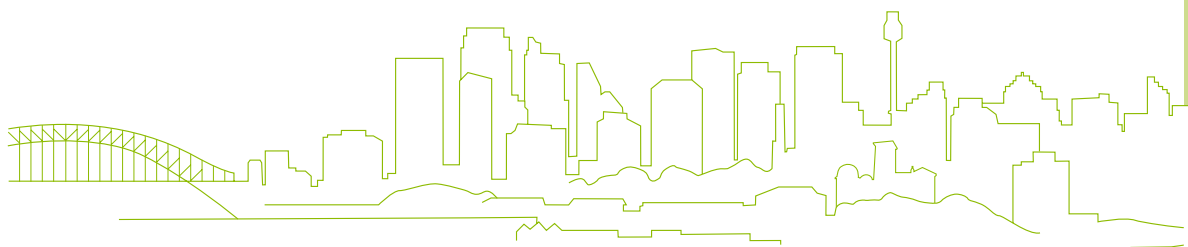
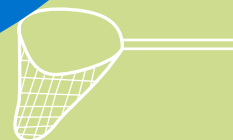
Phone: Observatory Hill EEC on 9247 7321

Email:

observhill-e.school@det.nsw.edu.au

For more information about this program and other environmental education programs, visit the Observatory Hill EEC website at:

<http://observatoryhilleec.nsw.edu.au/secondary-programs>



NSW GOVERNMENT | Education Public Schools