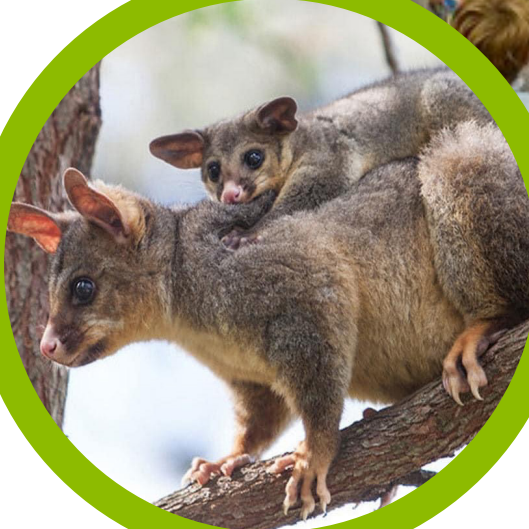


# Australian Easter - Living World

An incursion program to support ES1/S1 Science

*Australian Easter is an approx. 1.5 hr Science & Technology incursion focussing on the Living World topic. It particularly supports the key inquiry questions, 'What do we notice about living things' (ES1), 'What are the external features of living things' (S1) and 'How can we improve a local environment to encourage living things to thrive' (S1).*

Students will learn about Australia's unique animals through an interactive Australian Easter text, craft activities and music. Students will also make an Australian animal gift and card to take home.



Cost

\$10 per student

Enquiries:

Phone: Observatory Hill EEC on 9247 7321

Email:

observhill-e.school@det.nsw.edu.au

For more information about this program and other environmental education programs, visit the Observatory Hill EEC website at:

<https://observatoryhilleec.schools.nsw.gov.au/primary-programs>

Our Centre is staffed by **experienced and qualified DoE Teachers**. It provides **cost effective, curriculum linked** programs that strengthen classroom learning, as well as **Risk Assessment** advice for all programs.

