

Urban Dynamics – Pymont

A fieldwork program to support Stage 6 Geography

OBSERVAT
ENVIRONMENTAL EDUCATION CENTRE



RY HILL

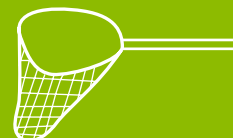
'*Urban Dynamics – Pymont*' is a Geography fieldwork program that supports Stage 6 Geography and focuses on the dynamics of urban renewal and urban consolidation in Pymont.

Students undertaking the fieldwork will investigate the outcomes of the urban dynamics of **urban renewal** and **urban consolidation** in **Pymont**, a suburb undergoing rapid change as a result of these dynamics. Students will collect fieldwork data on their mobile devices, including images of urban dynamics at work and their economic, social and environmental outcomes. They will practice mapping skills, and will receive a virtual map of their data after their fieldwork. The students will also assess the sustainability and liveability of Pymont, using 'best practice' planning principles, in order to answer a fieldwork question.



The program has three main components

1. Introductory activities and resources to introduce the students to the fieldwork.
2. A whole day fieldwork experience in Pymont and the CBD.
3. Follow up activities to enhance geographical knowledge and skills.



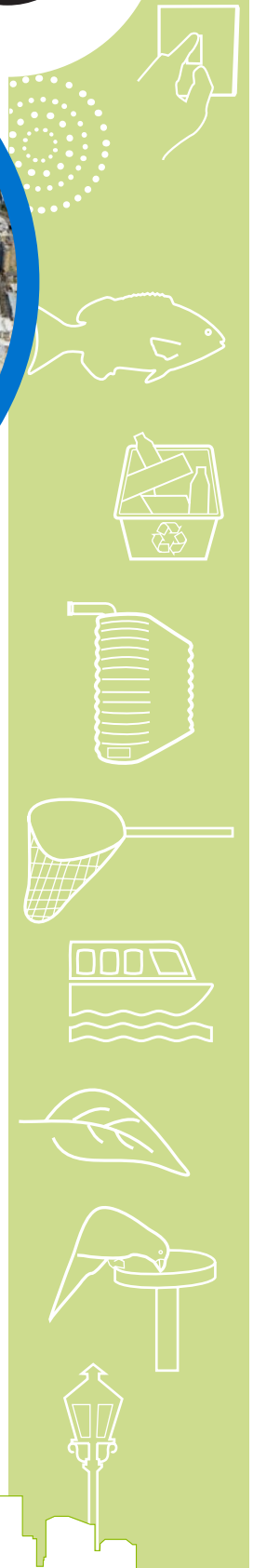
Urban Dynamics – Pyrmont

A fieldwork program to support Stage 6 Geography

This program supports the Stage 6 Geography syllabus outcomes of:

- ☀ Urban dynamics of change
- ☀ A case study showing one of the urban dynamics operating in a suburb.
- ☀ Using geographical skills and tools including conducting fieldwork.

OBSERVAT
ENVIRONMENTAL EDUCATION CENTRE



Cost: From \$10 per student

Enquiries: Phone: Observatory Hill EEC on 9247 7321

Email: observhill-e.school@det.nsw.edu.au

For more information about this program and other environmental education programs, visit the Observatory Hill EEC website at:

<http://observatoryhilleec.nsw.edu.au/secondary-programs>

